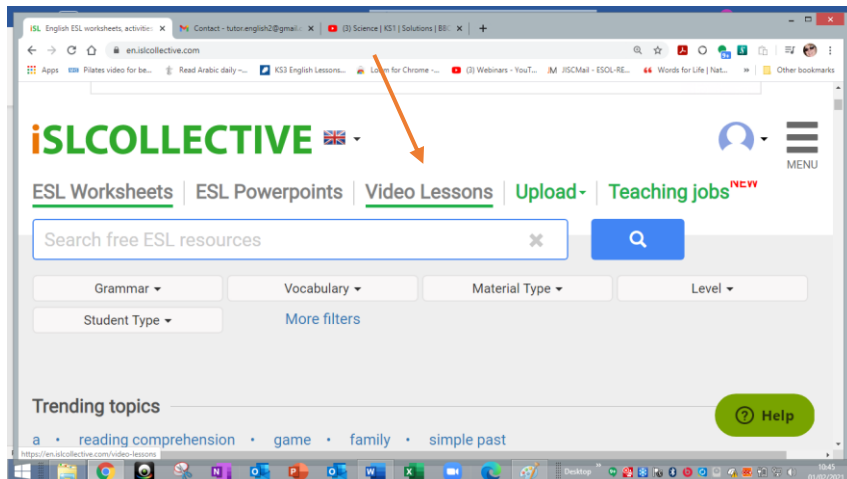


How to add comprehension questions to a video on ISL Collective

Create an account at <https://en.islcollective.com/>. It's free.

Find a video that you would like your students to watch on **YouTube** and copy the URL.

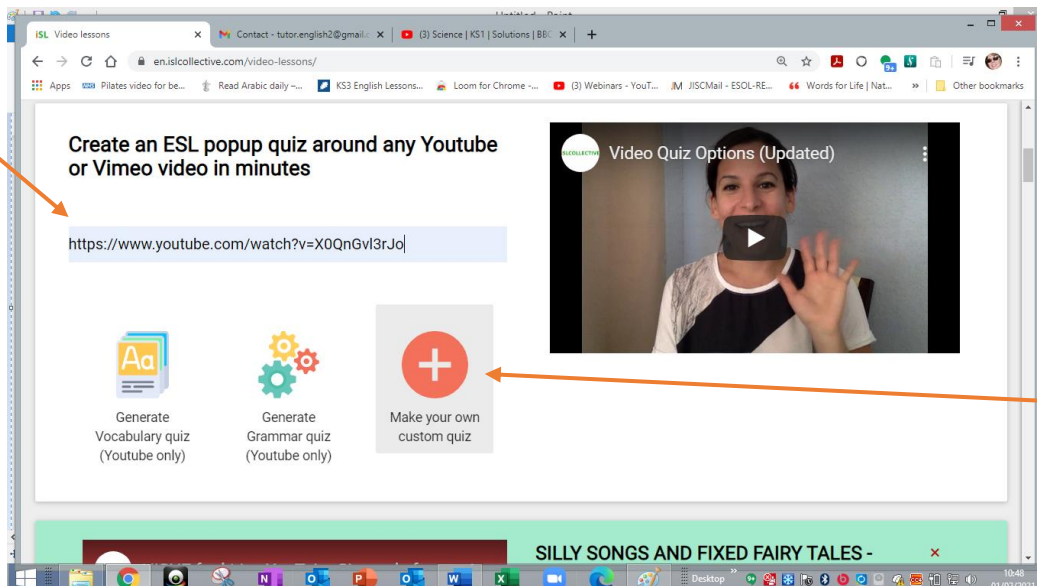
Make sure you are logged in to ISL Collective and go to **Video Lessons**.



Scroll down to: *'Create an ESL popup quiz around any Youtube or Vimeo video in minutes'*.

Paste the URL of the video you want to edit in the space provided.

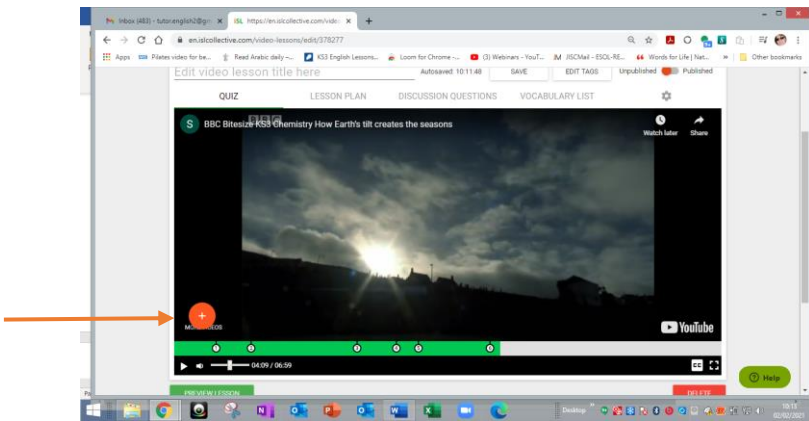
Then press the red icon: *'Make your own custom quiz'*. (Alternatively, you can choose a custom vocabulary or grammar quiz but you will need to check the content is right for your student.)



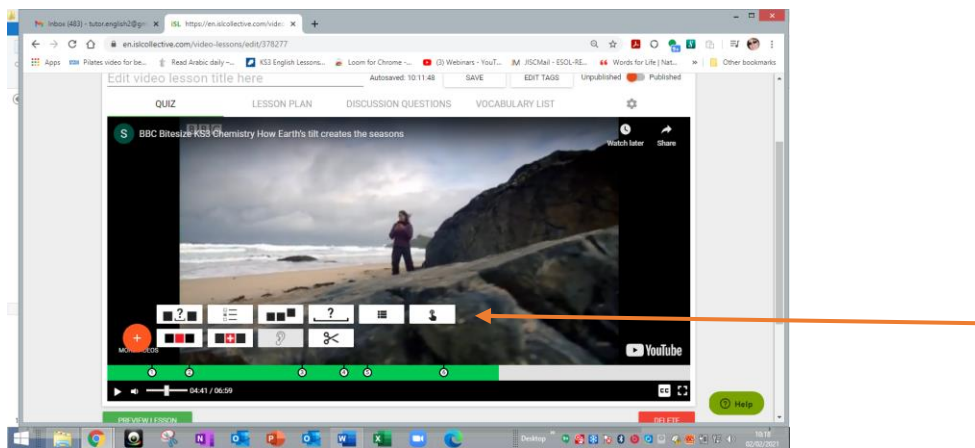
Note: there is a video tutorial on the right that you may want to watch first.

Close any ads that pop up.

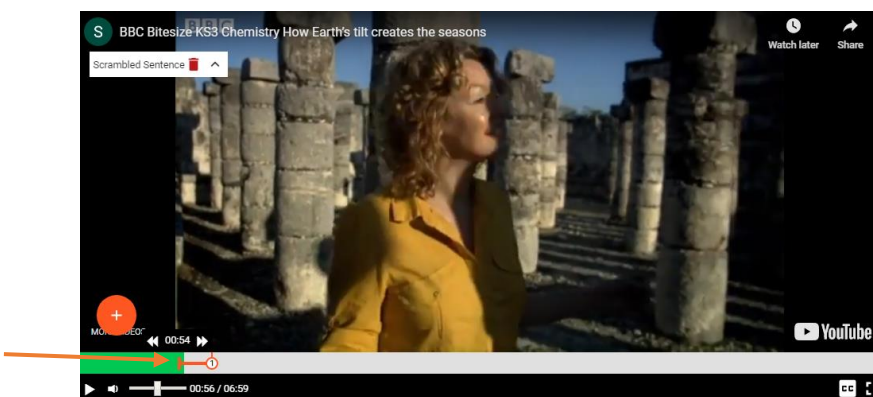
Play your video and as you play, click the orange cross when you want to add a question.



Choose from **multiple choice**, **open ended questions**, **scrambled words**, etc. You can even give a word for something in the picture that the students need to click on to demonstrate understanding (SEE arrow).



There is an orange line that takes the student back to the correct place to listen again if they are unsure of the answer. Slide this backwards or forwards to make the replay point where you want it.



Press **CONTINUE** when you are happy with your question.

Cut unwanted parts of the video out using the **scissors** icon which comes up next to the question icons (see previous picture).

A key word list can be made by clicking **VOCABULARY LIST** at the top of the video whilst in editing mode. You need to add the definitions and translations yourself. The good thing is that it will come attached to your video. Here's an example:

Vocabulary list

The 4 seasons of the year: spring, summer, autumn, winter: الموسم - الربيع الصيف الخريف الشتاء
equinox : the time when day and night are of equal length (about 22 September and 20 March) الاعتدال
ancient: very old عتيق / قديم
aligned: in the same line محاذاة
shade: shadow, no light الظل
believe - verb, belief - noun: think something is true يصدق الاعتقاد
messenger: someone who brings a message رسول
a turning point: a time of important change نقطة تحول
hemisphere: half of the Earth or half of a sphere (ball shape) نصف الكرة الأرضية
orbit: the path round a planet or star يدور في مدار
tilt - noun and verb: lean over on one side, not straight إمالة إلى الجانب
solar energy: the sun's energy طاقة شمسية

Other additions such as lesson plan and discussion questions can be added too by clicking the relevant tabs above the video.

Once you are happy with everything, choose **Publish** (top right) and it will be available for everyone to see on the ISL Collective website. You can then share the link with your students.

If you want to change anything, first log in and then you can bring the video back up by going to your profile icon (top right) and choosing the drop-down menu where you will find **my creations**. Make sure you have chosen **my published (or draft) video lessons** in the blue box below that, as the default is **my worksheet uploads**, which will not let you see your videos.

The screenshot shows the iSLCollective website interface. At the top left is the logo 'iSLCOLLECTIVE' with a UK flag. To the right is a user profile icon and a 'MENU' button. Below this is a navigation bar with tabs: Info, Wall, Recommend, Comments, My creations (highlighted), My favorites, Inbox, Social, Payments / Help, and Settings. A search bar is present with the text 'Search your self-created resources'. Below the search bar are filters for Grammar, Vocabulary, Material Type, Level, and Student Type. At the bottom, there are sorting options: Order By: Newest, Most downloaded, Most favoredited; and Period: All-time. A dropdown menu is open under 'My creations', showing options: My published video lessons (highlighted with an orange arrow), My draft video lessons, My copied-edited video lessons, My worksheet uploads, and My powerpoint uploads.

Once you can see your video, you can choose the **Edit** tab underneath it to make any changes.

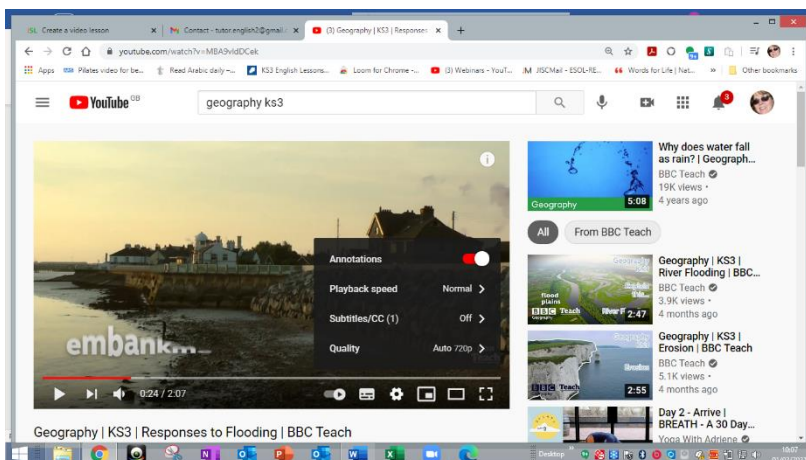
Other Options



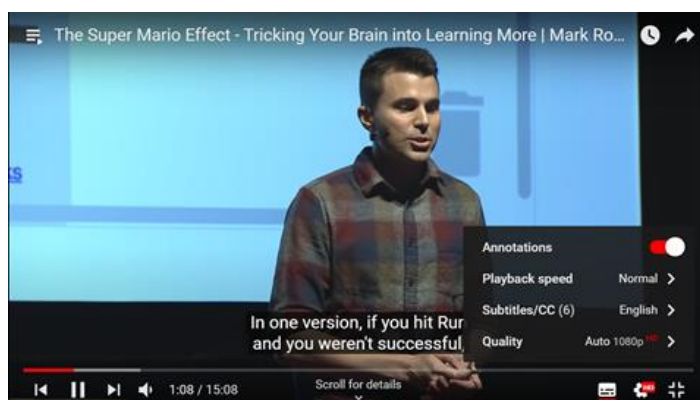
When starting the video, the students will automatically be asked to choose from the *play modes*. (If they ignore this, the video will just be played in the normal way with the quiz questions you have added.)

For example, you may want the learners to watch the video first (or last) without the quiz questions so for this purpose there is the option *watch video without quiz*. There is also a choice of a *casino game* mode but it might be better to avoid this as it could be seen as encouraging gambling.

There are other options available on **YouTube** that you might want to explain to the student so that they can access these before or after the task. On **YouTube** beneath the video, there is often an option for **subtitles**, which can be very helpful for EAL students. Next to this is **'settings'** where more options are available, including:



Playback speed, where a slower speed can be chosen. (0.75 slows it down without too much distortion)



Translation – when available you can click **subtitles** here and choose from a larger selection of languages. [This video](#) gives more information on the options available for subtitles.

EAL Strategies covered:

- scaffolding a curricular topic to make it accessible to the student whilst keeping the cognitive challenge appropriately high
- providing strong visual cues to support listening comprehension
- helping learners of EAL to extend their vocabulary in an enjoyable way
- providing definitions and translation of key words (see the list below the video) that can be referred to prior to the video to aid understanding
- regular questions throughout to check comprehension followed by explanations to reinforce learning
- developing EAL learners' independence
- providing the opportunity for students to work at their own pace by pausing or replaying the relevant part(s) of the video before answering